

State of Wyoming Corner Record

(In compliance with the CORNER PERPETUATION AND FILING ACT, Wyoming Statutes, 1977, Section 38-11-101, et. seq., and the Rules and Regulations of the Board of Registration for Professional Engineers and Professional Land Surveyors)

Reverse side of this form may be used if more space is needed.

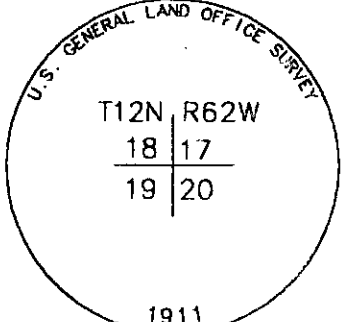
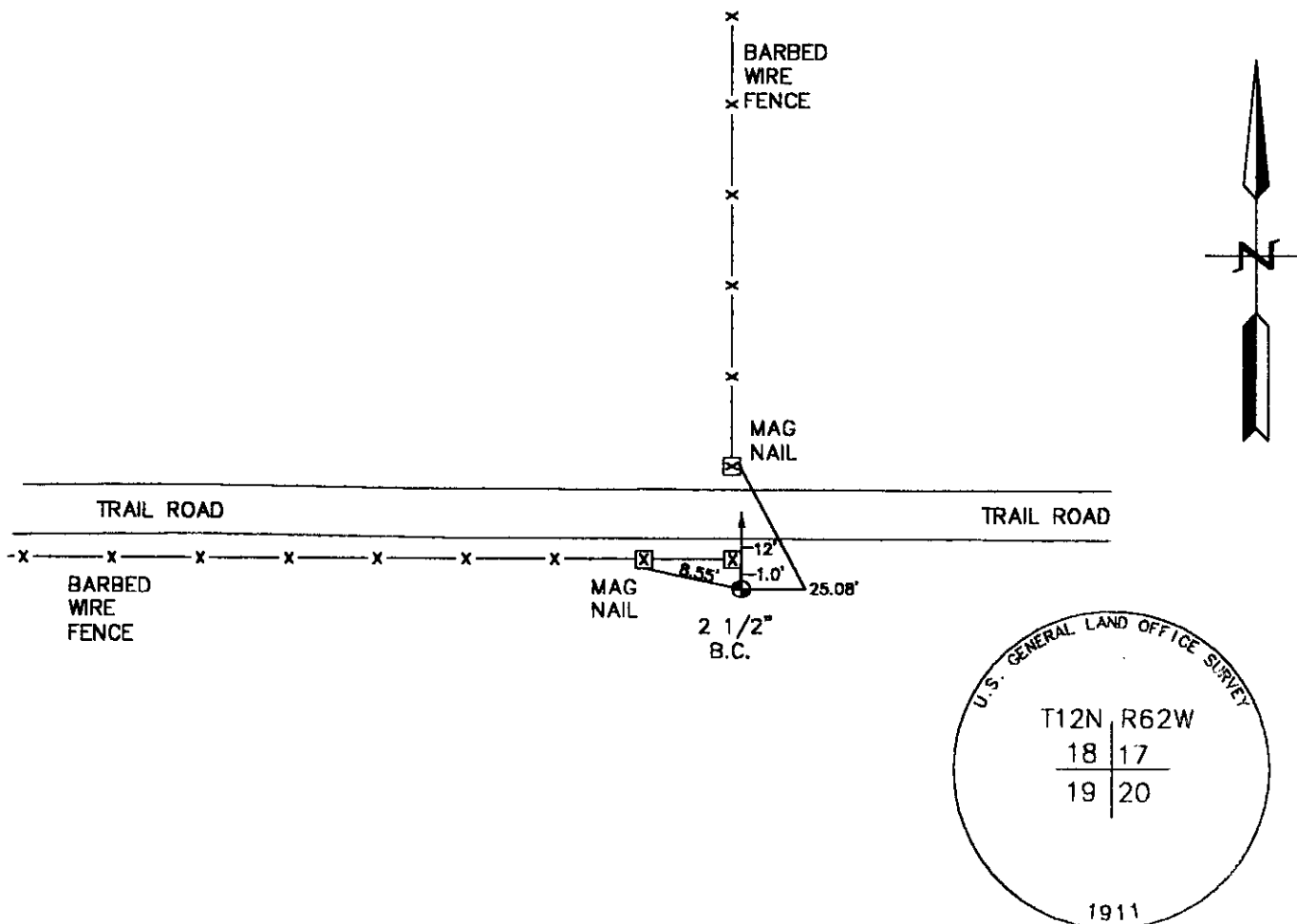
Record of original survey and citation of source of historical information (if corner is lost or obliterated). Description of corner monumentation evidence found and/or monument and accessories established to perpetuate the location of this corner. Sketch of relative location of monument, accessories, and reference points with course and distance to adjacent corner(s) (if determined in this survey). Method and rationale for reestablishment of lost or obliterated corner.

GLO RECORD: SET AN IRON POST, 3' LONG, 2" IN DIAMETER, 2 1/2' IN THE GROUND FOR CORNER TO SECTION 17, 18, 19, & 20 WITH 2 1/2" GLO BRASS CAP.

MONUMENT FOUND: FOUND A 2 1/2" BRASS CAP ON A 2" PIPE PROJECTING 8" ABOVE THE GROUND. BRASS CAP STAMPED AS SHOWN BELOW.

MONUMENT SET: NOTHING SET.

REFERENCES: MONUMENT LIES 1' SOUTH OF A NORTH & WEST FENCE CORNER. SET MAG NAILS FOR REFERENCE. TIES SHOWN BELOW.



Date of this Record: 2-3-98

Office Reference: 98051

CROSS INDEX DIAGRAM

Firm/Agency, Address

STEIL SURVEYING SERVICES, LLC.

1102 WEST 19th STREET

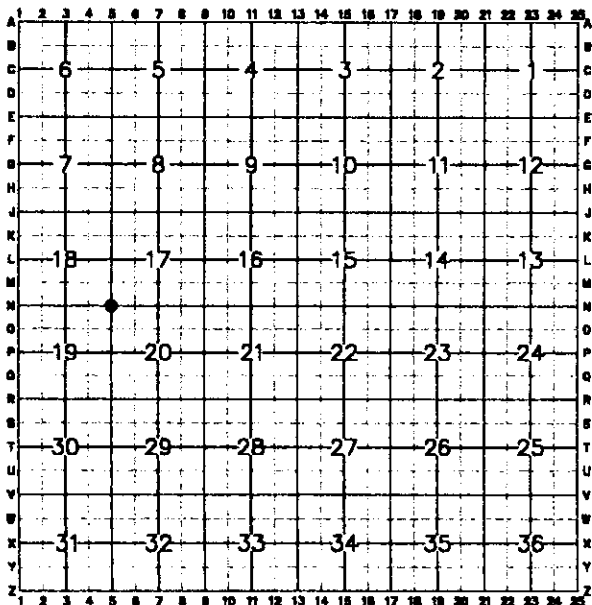
CHEYENNE WY 82001

Telephone Number: (307) 634-7273

This corner record was prepared by me or under my direction and supervision.

SEAL & SIGNATURE

[Handwritten Signature]
12/1/00



Corner Name: SW SECTION CORNER Section: 17 T 12N R 62W; 6th P.M. Cross-Index No.: N-5
SBRPEPLS/PLSW: March 1994